

New York's Greatest Musical Bargain

Peoples' Symphony Concerts was founded in 1900 by the conductor Franz X. Arens with the purpose of bringing the best music to students and workers for minimum prices. Since those early years, hundreds of thousands of Peoples' Symphony Concerts audience members have heard the world's foremost concert artists and ensembles at the lowest admission prices of any major series in the country.

Today we offer a **six-concert series for as little as \$42 (\$7 per ticket)**, allowing students, families and others the opportunity to hear amazing concerts for less than half the cost of a movie. Offering concerts at both Town Hall on West 43rd Street and the historic Washington Irving High School Auditorium near Union Square, both with great acoustics and ambience, Peoples' Symphony Concerts presents artists of the highest caliber to New Yorkers on a budget. You only have to attend three concerts to make buying a series ticket the way to go.

FAMILY PASS: Parents who subscribe to the Arens, Mann, and/or Salomon Series receive up to two complimentary tickets per concert for their children (ages 6-18). This is a chance for a family to enjoy the gift of music together, even if they only stay for half of the concert.

UNLIMITED STUDENT PASS: Students 35 or younger can enjoy **unlimited access** to all 18 concerts with the Unlimited Student Pass. That means the best available seat for any and all concerts (in advance or the day of the concert) for one flat \$25 fee (\$1.39 per ticket).

Support

According to *The New York Times*, Peoples' Symphony Concerts has remained true to its mission – to provide “top music for bottom dollar.” We do not have the resources of other organizations, so **we need all of you to help honor this mission**. We hope you will make PSC one of your **charitable giving priorities** so we can continue to offer the highest level of classical music performances at the lowest ticket prices. When you order your series tickets for the 2017-2018 season, **please join our family of Peoples' Symphony Concerts supporters by including a contribution**. You can also join our **Legacy Society** with the pledge of a planned gift. Let's match the generosity of our artists who play for a fraction of their normal fees. All contributions are appreciated. Please note that The Alexander Schneider Foundation will **match all new and increased gifts** to help meet our needs for next season. Peoples' Symphony Concerts is a 501(c)(3) public charity. All contributions are deductible as allowed by law.

Instructions

1. Please complete the form for **series tickets only**. If available, single tickets go on sale September 15.
2. Kindly **include as generous a tax-deductible contribution as possible**.
3. **SERIES TICKET PROCESSING POLICY:** Orders are processed **in the order in which they are received**. No orders will be accepted at the office or by fax. Tickets will be mailed shortly after Labor Day.
4. **PAYMENT: Enclose a check** made payable to “Peoples' Symphony Concerts” and mail to:
Peoples' Symphony Concerts
121 West 27th Street, Suite 703
New York, NY 10001
5. We regret that there can be **NO EXCHANGES** and **NO REFUNDS**.
6. Artists and programs are subject to change.

Contact

PEOPLES' SYMPHONY CONCERTS

Frank Salomon, Manager

Jonathan Moss, Production Manager

Visit: pscny.org

Write: info@pscny.org

Call: (212) 586-4680 (Telephone hours are Monday-Friday from 10:00 a.m.-4:00 p.m.)

PEOPLES' SYMPHONY CONCERTS

121 West 27th Street, Suite 703

New York, NY 10001-6262

NONPROFIT ORG
U.S. POSTAGE PAID
NEW YORK, NY
PERMIT NO. 720

NY's BEST MUSICAL BARGAIN!

Now offering new **FAMILY PASS (children free) &**

UNLIMITED STUDENT PASS - flat \$25 fee (\$1.39 per ticket)

2017-2018 Season

Peoples' Symphony Concerts

“Top Music for Bottom Dollar”

~ *The New York Times*



ARENS SERIES

Saturdays at 7:30pm

Washington Irving High School
40 Irving Place
(1 block east of Union Square at 16th Street)

\$42 per set of 6-concert series tickets for unreserved general admission seating (save \$36 off single ticket prices)

If series not sold out, single tickets at \$14 each available online at pscny.org and at venue each concert day from 5:30 pm.

Oct 21, 2017 - **Rosamunde String Quartet with Peter Wiley, cello**



Made up of young stars from three of the world's greatest orchestras. Hear them with the former cellist of the Guarneri Quartet in a program including Schubert's glorious *String Quintet in C Major, D. 956*.

Oct 28, 2017 - **Vladimir Feltsman, piano**



Pianist **Vladimir Feltsman** is one of the most versatile and constantly interesting musicians of our time. His remarkable interpretation of Mussorgsky's *Pictures at an Exhibition* make this concert an absolute must.

Dec 16, 2017 - **The Kalichstein-Laredo-Robinson Trio**



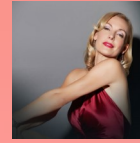
After four decades of success the world over, the **Kalichstein-Laredo-Robinson Trio** continues to dazzle audiences and critics alike with its performances. Beethoven-Dvořák-Brahms

Feb 10, 2018 - **Jörg Widmann, clarinet & Gilles Vonsattel, piano**



Jörg Widmann's recital with Mitsuko Uchida last season at Carnegie Hall demonstrated his virtuosity as a clarinetist and composer. We get to hear him with the wonderful Gilles Vonsattel in Mendelssohn, Weber, Schumann and Widmann.

April 7, 2018 - **Ute Lemper**



An artist who has been hailed on the stage, in film, and on over 30 CDs, her program takes us on a journey that starts in Berlin with Ute's root repertoire of Brecht, Weill, and the Berlin cabaret songs.

May 5, 2018 - **Dover Quartet**



PSC Resident Ensemble

The **Dover Quartet's** rise from an up-and-coming young ensemble to occupying a spot at the top of their field has been "practically meteoric" (*Strings*). The group was awarded the Avery Fisher Career Grant in March 2017.

MANN SERIES

Saturdays at 7:30pm

Washington Irving High School
40 Irving Place
(1 block east of Union Square at 16th Street)

\$42 per set of 6-concert series tickets for unreserved general admission seating (save \$36 off single ticket prices)

If series not sold out, single tickets at \$14 each available online at pscny.org and at venue each concert day from 5:30 pm.

Oct 14, 2017 - **Shai Wosner, piano**



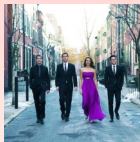
Hailed as a great Schubert interpreter, he has designed a fascinating program alternating Schubert's touching Impromptus with ones of Chopin, Dvořák, Gershwin and Ives, ending with the Schubert *Sonata in D* (Gasteiner).

Nov 4, 2017 - **Juilliard String Quartet**



The **Juilliard Quartet** has been delighting PSC audiences since soon after their founding in 1946. Now entering their 72nd season, their current configuration produced stunning results last season. Beethoven Op.18/5, Op. 127, & MacMillan #2

Nov 18, 2017 - **Dover Quartet**



PSC Resident Ensemble

Their fascinating program includes works of triumph and hope by Laks and Ullmann, coupled with joyous Mendelssohn and Schumann's *Quartet No. 2*, a love poem and birthday gift to his beloved wife Clara.

Jan 20, 2018 - **Chamber Music Society of Lincoln Center**



It is a special treat to have Co-Artistic Director cellist David Finckel and three other Artist Members of the **Chamber Music Society** at PSC. They bring a wonderfully varied program of Beethoven, Mozart, and Smetana.

Feb 24, 2018 - **Narek Hakhnazaryan, cello**



Since winning the Cello First Prize and Gold Medal at the Tchaikovsky Competition at the age of 22, Narek has performed with major orchestras across the globe and has established himself internationally as one of the finest cellists of his generation.

May 12, 2018 - **Brahms's All-Star Sextet**



One cannot find six more marvelous artists to do justice to the pure romanticism of the two great Brahms Sextets. Laredo, Frank, Ngwenyama, Pajaro-van de Stadt, K. Robinson, S. Robinson. A wonderful season closer!

SALOMON SERIES

Sundays at 2:00pm

Town Hall
123 West 43rd Street

\$44 or \$67 per set of 6-concert series tickets for reserved seating (save up to \$41 off single ticket prices)

If series not sold out, single tickets at \$15 and \$19 available online at pscny.org and at Town Hall each concert day from 1:00pm.

Dec 10, 2017 - **Variation String Trio with Orion Weiss, piano**



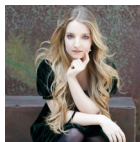
Variation String Trio with Orion Weiss offers string trios by Beethoven and Schubert, a new work by Nina Young, and Brahms' C Minor Piano Quartet. Among today's most exciting artists, the VST delights their audiences.

Feb 11, 2018 - **Kirill Gerstein, piano**



Kirill Gerstein, one of the preeminent pianists of his generation, charmed us all in his prior PSC appearance, so we eagerly look forward to his return in a fascinating program of Bach, Debussy, Chopin, Adés, and Schumann.

Mar 4, 2018 - **Lise de la Salle, piano**



Lise de la Salle celebrates the release of her exciting new Naive recording with all of us. With a Bach focus, her program and CD include the Italian Concerto, the Liszt Fantasy & Fugue on the Theme B-A-C-H, and the brilliant Bach/Busoni Chaconne. We can't wait!

Apr 15, 2018 - **Leon Fleisher with the Peabody Chamber Orchestra**



Leon Fleisher with the Peabody Chamber Orchestra playing Mozart K. 414 and conducting the Jupiter Symphony is bound to be an experience to cherish, as are all performances by this legendary artist.

Apr 22, 2018 - **Stefan Jackiw, violin and Jeremy Denk, piano**



For *The New York Times*, their fascinating exploration of the church tunes and patriotic melodies of Charles Ives made for an absolutely "exciting night."

Apr 29, 2018 - **Juilliard String Quartet**



An annual favorite at Washington Irving, to celebrate the **Juilliard String Quartet's** most recent incarnation, we're also delighted to present them at Town Hall - a first. Haydn - Bartók - Dvořák.

Please keep me on PSC's mailing list even though I cannot purchase series tickets at this time.

Please print clearly:

Name _____
Address _____
Apartment _____
City _____
State & ZIP _____
Daytime Phone _____
Email _____

Please send me _____ brochures to distribute in my neighborhood.

2017-2018 Arens and Mann Series Tickets		Cost		Sets of Series Tickets		Total
A. Unreserved series tickets for Arens Series		\$42	X		=	\$
B. Unreserved series tickets for Mann Series		\$42	X		=	\$
2017-2018 Salomon Series Tickets at Town Hall		Cost		Sets of Series Tickets		Total
C. Center Orchestra and Front Side Orchestra		\$67	X		=	\$
D. Front Center Balcony and Side Balcony (requires use of stairs)		\$67	X		=	\$
E. Rear Side Orchestra		\$44	X		=	\$
F. Rear Center Balcony and Side Balcony (requires significant use of stairs)		\$44	X		=	\$
				Series Subtotal \$ _____		
I would like to join my fellow subscribers as a contributor to PSC in the amount of \$ _____				GRAND TOTAL \$ _____		
If seating location is sold out, my next choices are: _____						
If series is sold out, my next choices are: _____						

Office use only:	Check	Total	Ticket	Contrib.	ASF